

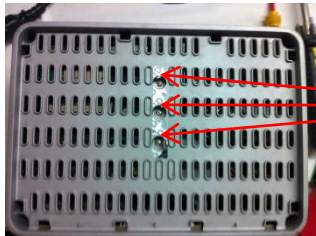
**Sonos ZP100 dismantle  
and possible repair  
guide following  
surge/spike on supply  
resulting in unit not  
powering up.**

Please follow this guide at your own risk. Thanks.

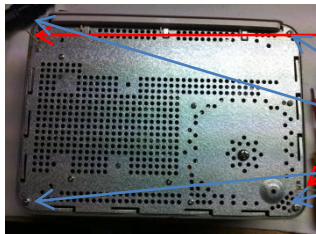
# Outer casing



- 1 – Remove the rubber covers from the feet
- 2 – Remove the 4 screws under the covers

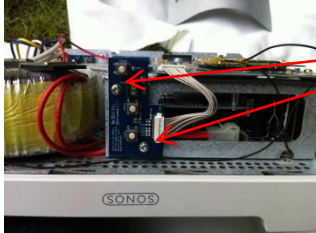


- 3 – Turn over and unclip the top cover
- 4 – Remove the 3 screws under the warranty sticker this will invalidate your warranty.



- 5 – Turn over and remove the bottom of the case ( the 2 antennae are now exposed be careful not to damage them)
- 6 – Remove the 4 screws in the corners of the main chassis
- 7 – Remove the aluminium top outer casing.

# Front buttons

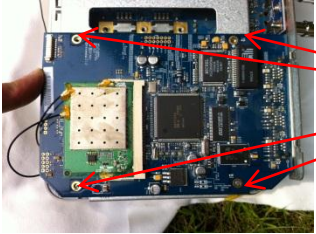


**1 – Remove the 2 screws**

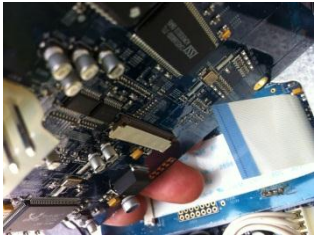


**2 – Unclip the connector**

# Network card



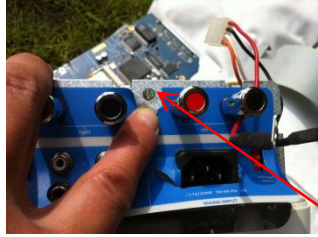
**1 – Remove the 4 top screws**



**2 – Unplug the power connector**

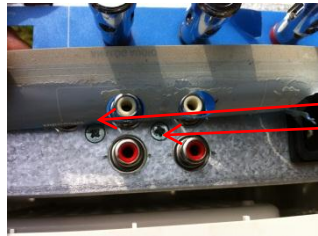
**3 – Unplug the ribbon connector (release by gently pulling the end clamp clips forward)**

# Phono chassis

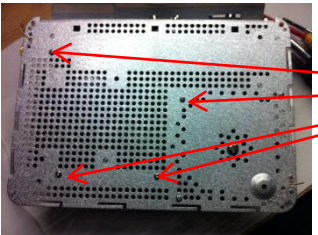


**1 – Remove the 2 screws in the bottom of the main chassis and remove the metal shield.**

**2 – Disconnect right side speaker wires from the back of the connectors to allow better movement of the phono card.**

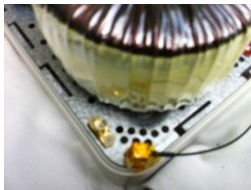
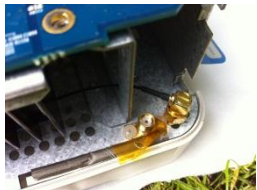


**3 – Remove the 3 countersunk screws from under the back sticker.**



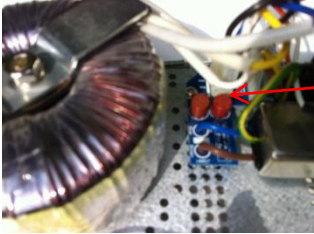
**4 – Remove the 4 screws from the underside of the main chassis.**

**5 – Unplug the 2 power connectors.**

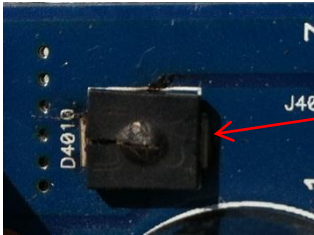


**6 – Unscrew the 2 antennae plugs**

# Possible repair



**In my case the unit didn't power up. One of the surface mount slow blow fuses had blown.**



**And the 48v surface mount diode on the power supply board.**

**From reading forums this appears to be a common fault. The replacement parts cost just £1.60 so good luck if you attempt the repair yourself.**